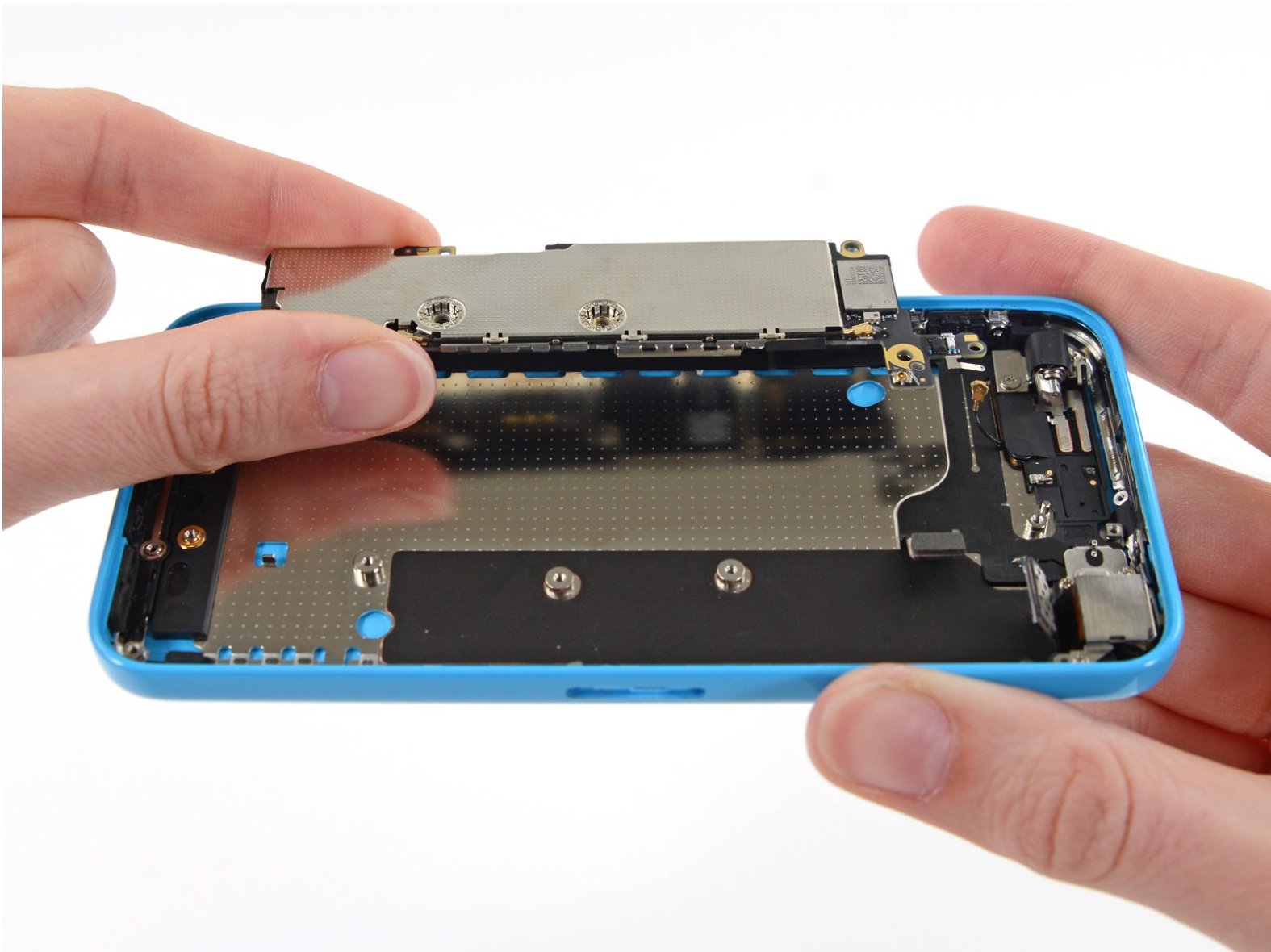




iPhone 5c Logic Board Replacement

prereq for rear case guide

Written By: Andrew Optimus Goldheart

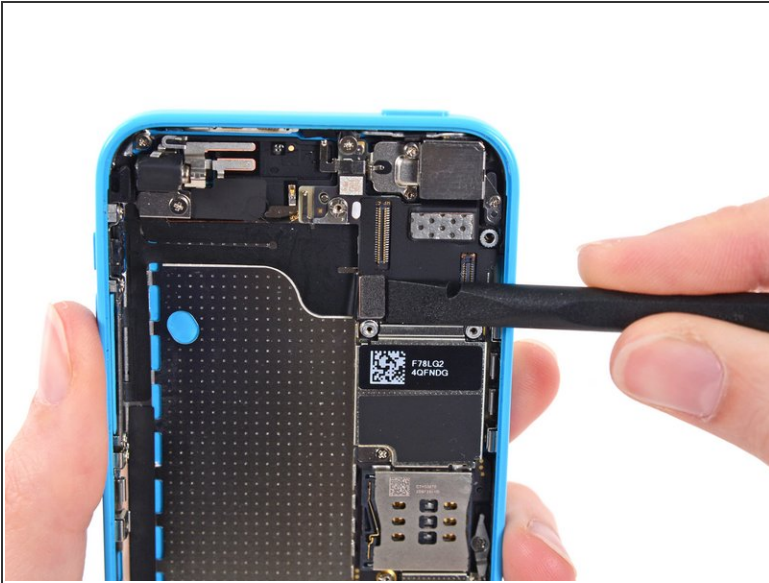




TOOLS:

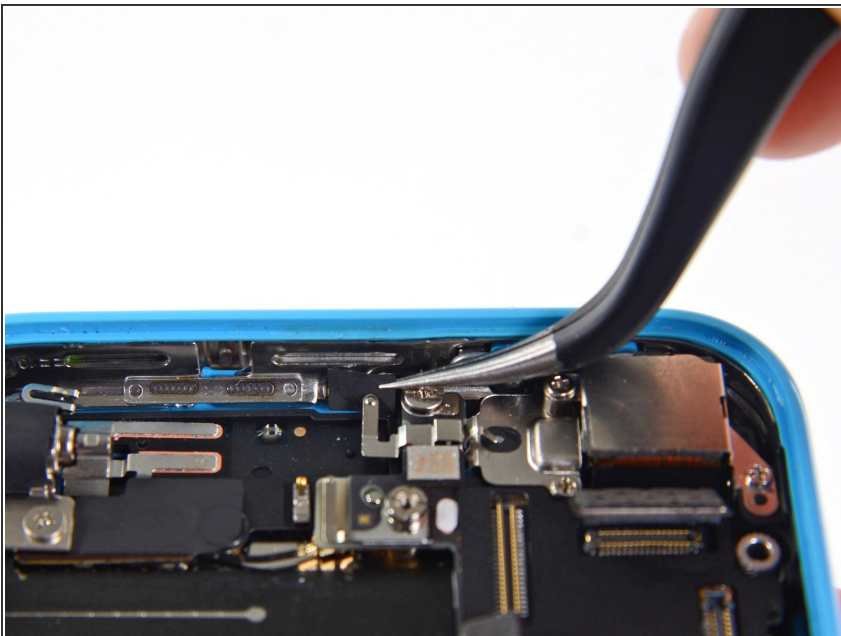
- [Spudger](#) (1)
- [Tweezers](#) (1)
- [Phillips #000 Screwdriver](#) (1)

Step 1 — Logic Board



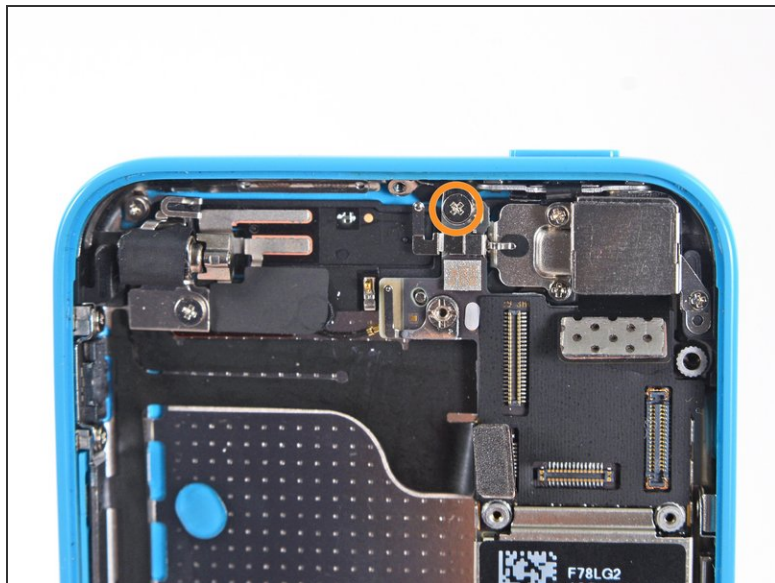
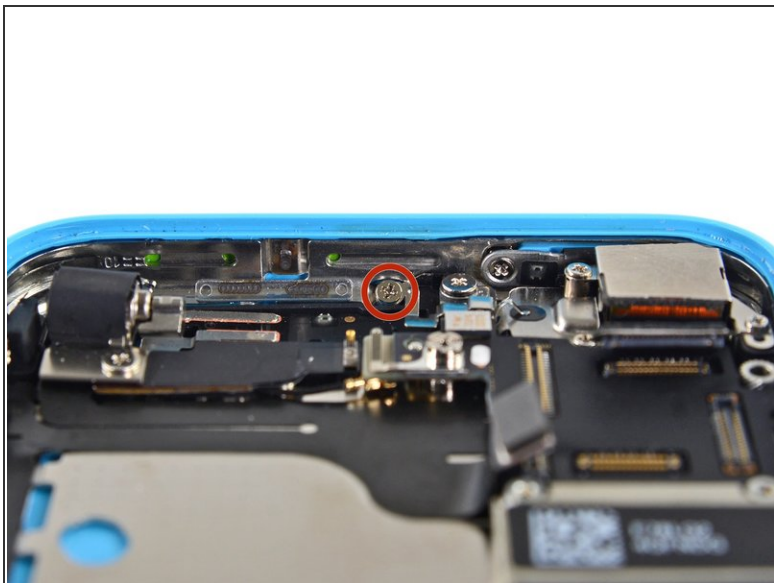
- Use the flat end of a spudger to disconnect the audio control cable connector from its socket on the logic board.
- Disconnect the rear facing camera cable connector from its socket on the logic board.

Step 2



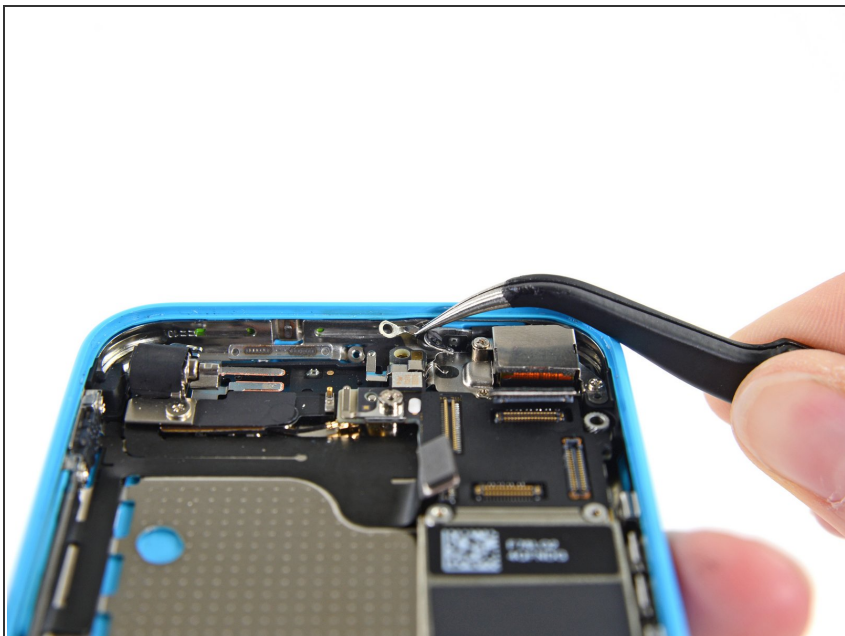
- A small piece of tape may obscure the logic board grounding clip. If so, use a pair of tweezers to remove the tape.

Step 3



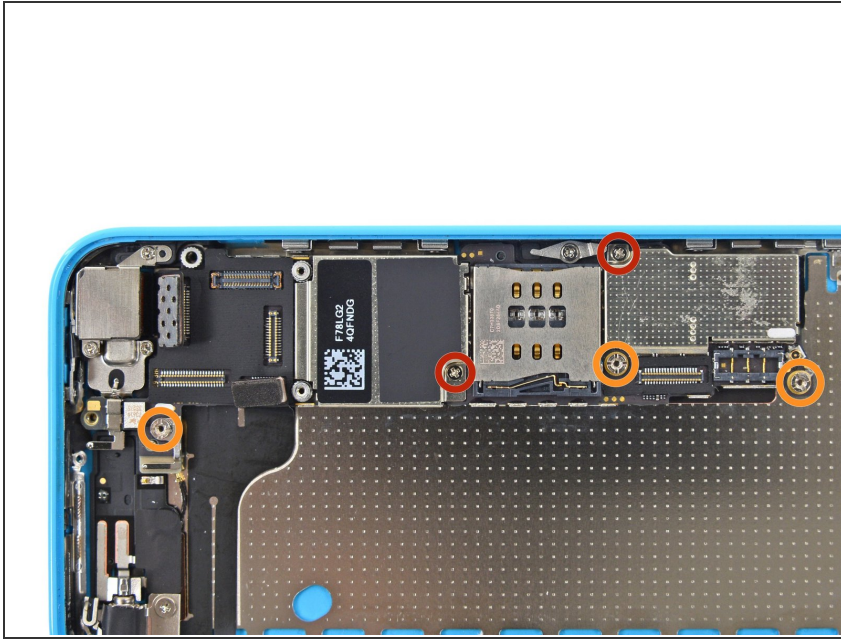
- Remove the following screws securing the logic board grounding clip to the rear case:
 - 1.2 mm Phillips #000 in the top side-wall
 - 2.5 mm Phillips #000

Step 4



- Use tweezers to remove the logic board grounding clip.

Step 5



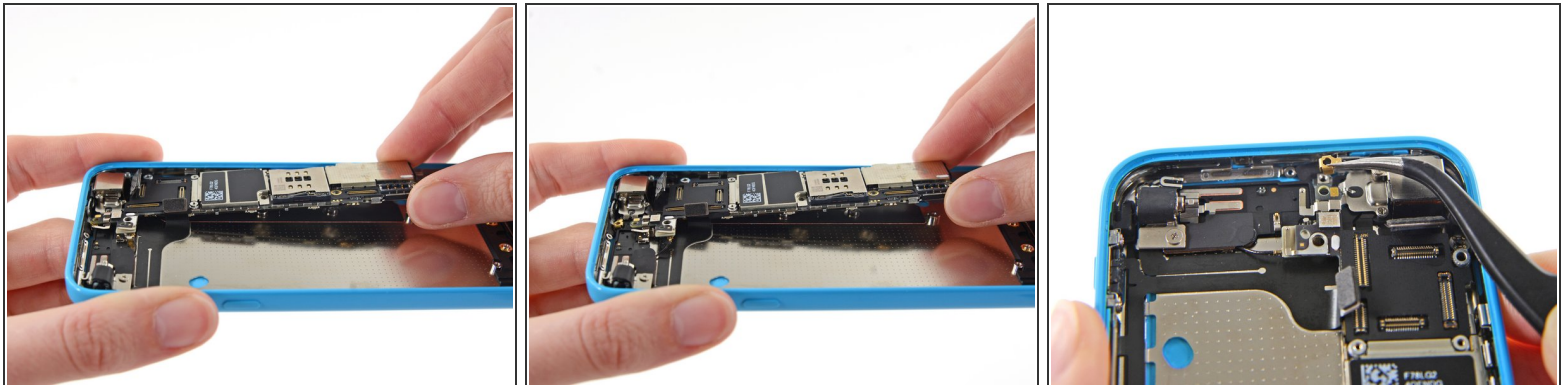
- Remove the following screws securing the logic board to the rear case:

- Two 2.3 mm Phillips screws
- Three 2.7 mm standoff screws

ⓘ Standoff screws are best removed using an [iPhone Standoff Screwdriver Bit](#) and [driver handle](#).

⚠ In a pinch, a small flathead screwdriver will do the job—but use extra caution to ensure it doesn't slip and damage surrounding components.

Step 6




- Holding the phone level, lift the bottom end of the logic board up enough to grasp it with your fingers.
- Pull the logic board away from the rear-facing camera just enough to expose the gold contact cap under the top end of the board.
- Remove the gold-colored contact cap from the threaded post in the rear case, and set it aside.

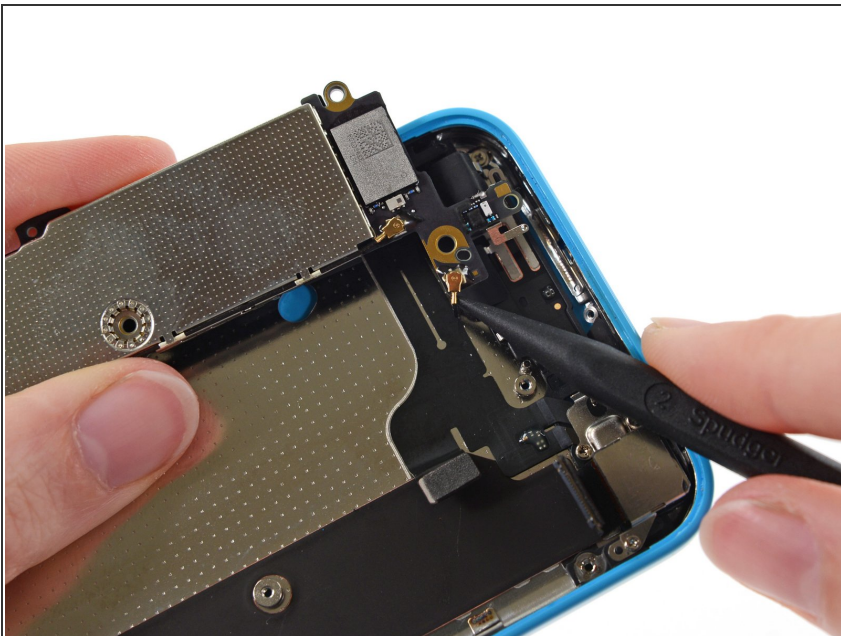
Step 7



- Flip the logic board up toward the volume control buttons to expose the antenna connector.

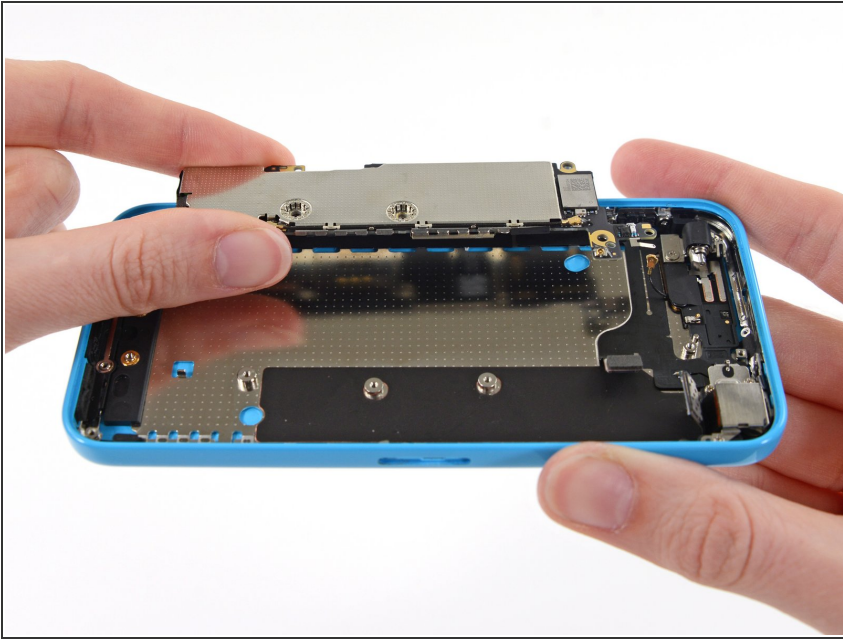
 Do not try to remove the logic board from the rear case yet, as it is still connected by an antenna cable on the back.

Step 8



- Disconnect the antenna connector from the back of the logic board.

Step 9



- Remove the logic board from the rear case.

To reassemble your device, follow these instructions in reverse order.